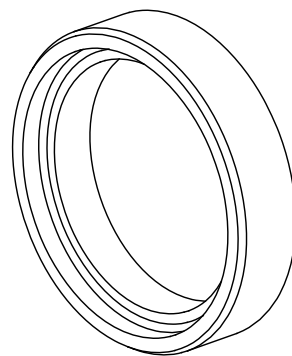


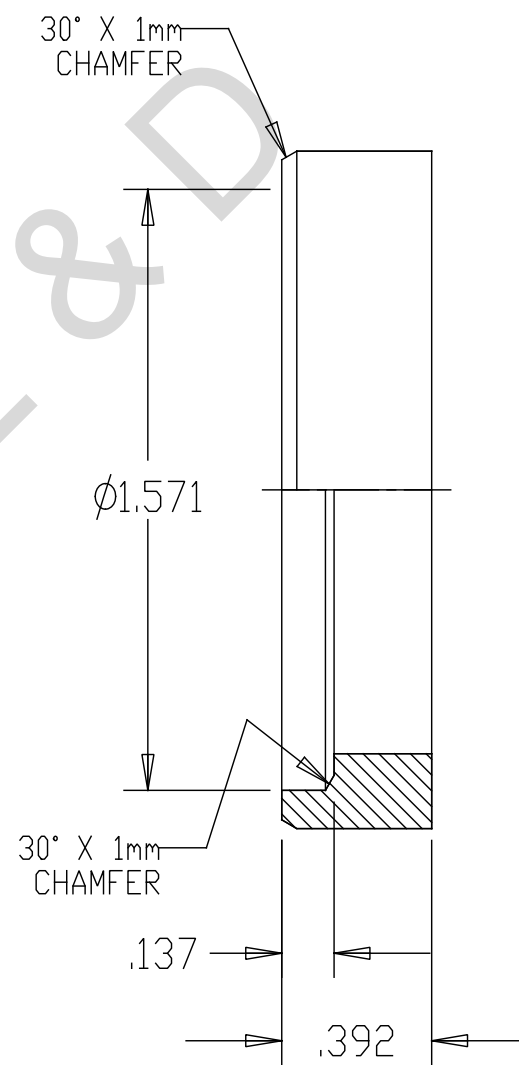
NOTES:

1. NO FLASH, BURRS, OR SHARP CORNERS.
2. MATERIAL: MILD STEEL.
3. SURFACE FINISH FOR RUBBER ROTARY SEAL.

PART NAME: FL350 DRIVE GEAR COLLAR  
 DRAWN BY: D\$ ALLSTAR  
 DATE: MAR 17, 2014  
 \*FOR REFERENCE ONLY\*  
 SCALE 2.000



SCALE 1.000



SECTION Z-Z