

N3307.5—W11107.5/7.5

1964

3668

3667

EET

3666

0" 11°15'

477

478

710 000 FEET

479

480

12'30"

1

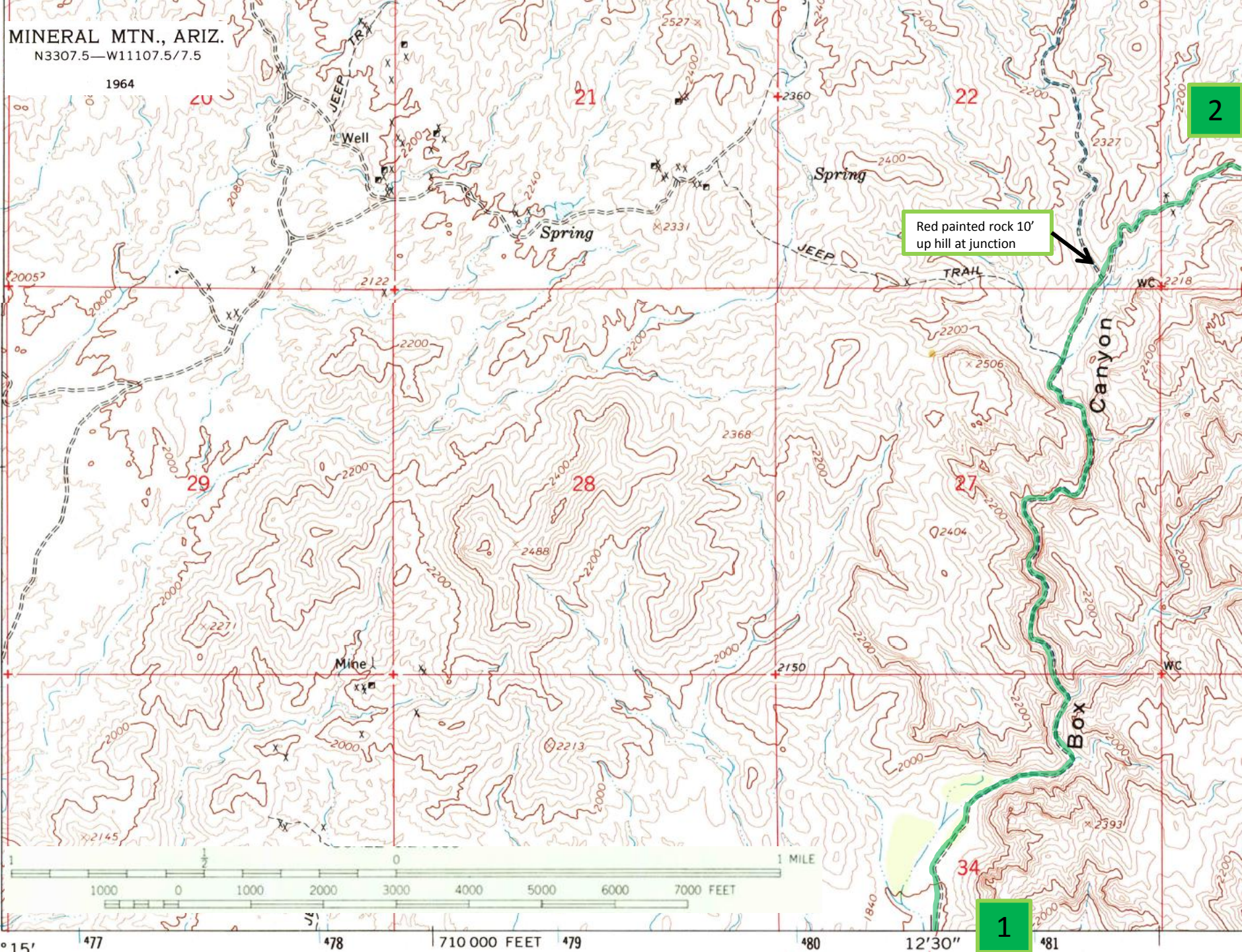
481

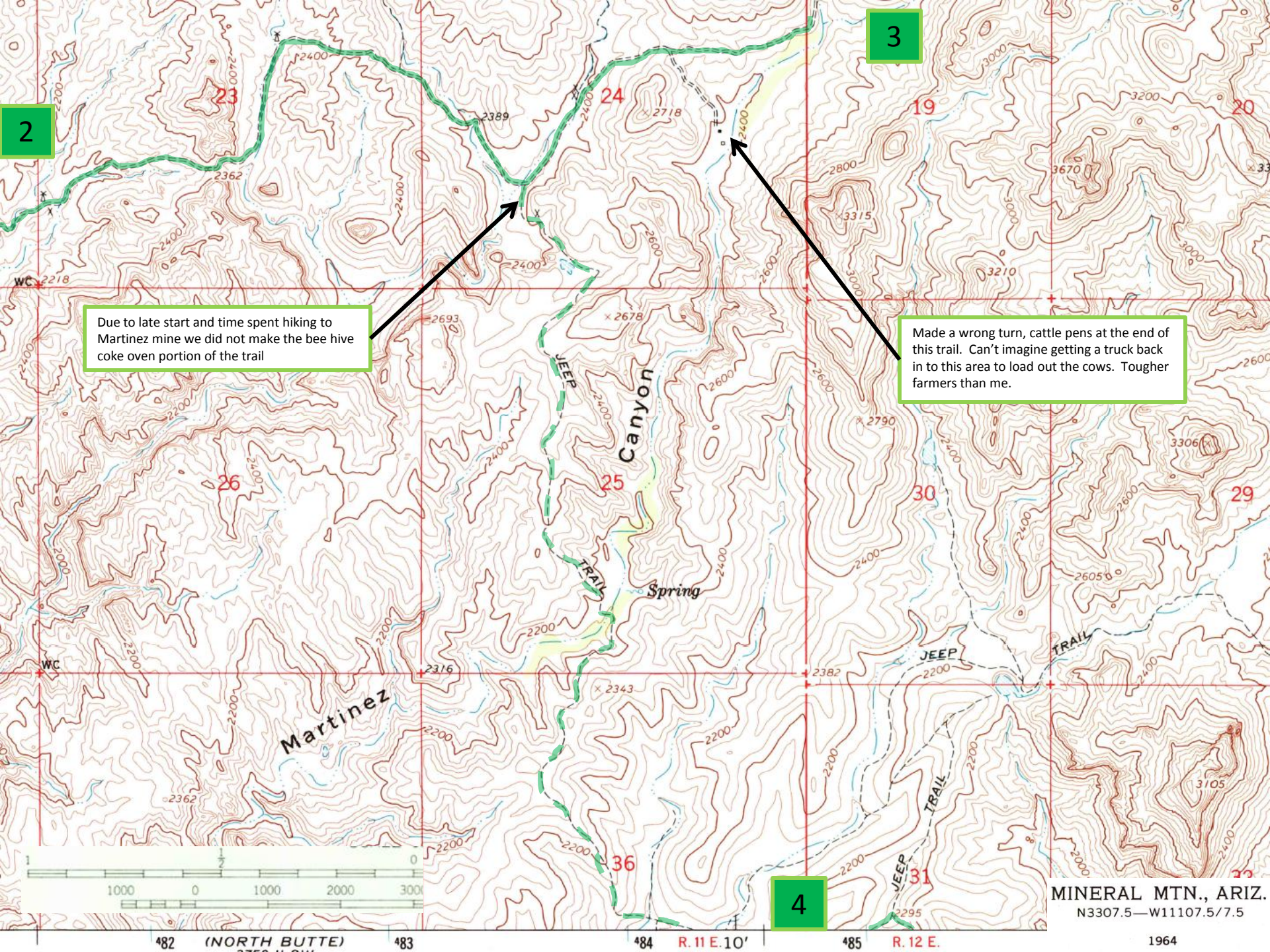
2

Red painted rock 10'
up hill at junction

Canyon

34





2

Due to late start and time spent hiking to Martinez mine we did not make the bee hive coke oven portion of the trail

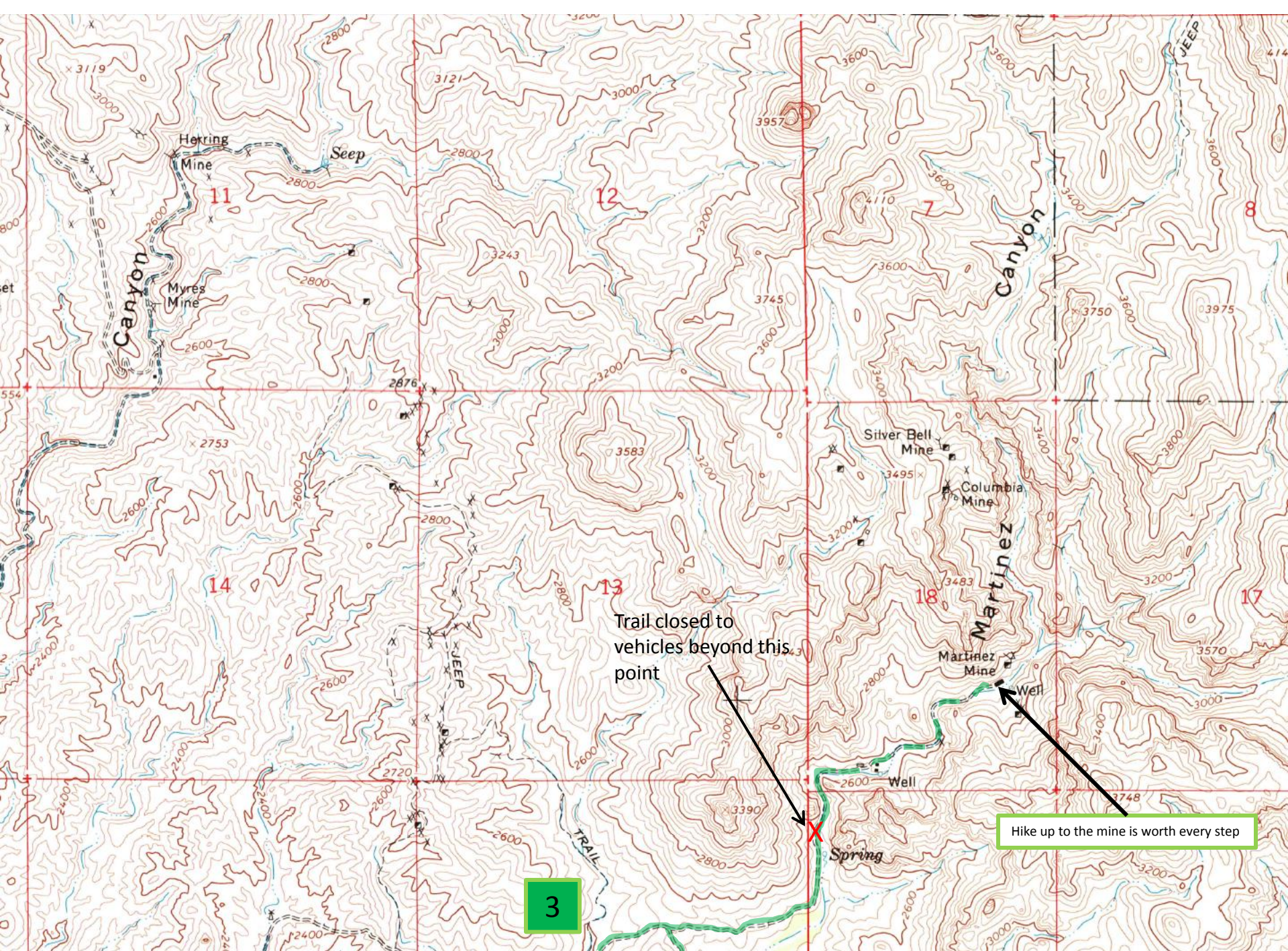
3

Made a wrong turn, cattle pens at the end of this trail. Can't imagine getting a truck back in to this area to load out the cows. Tougher farmers than me.

4

MINERAL MTN., ARIZ.
N3307.5—W11107.5/7.5

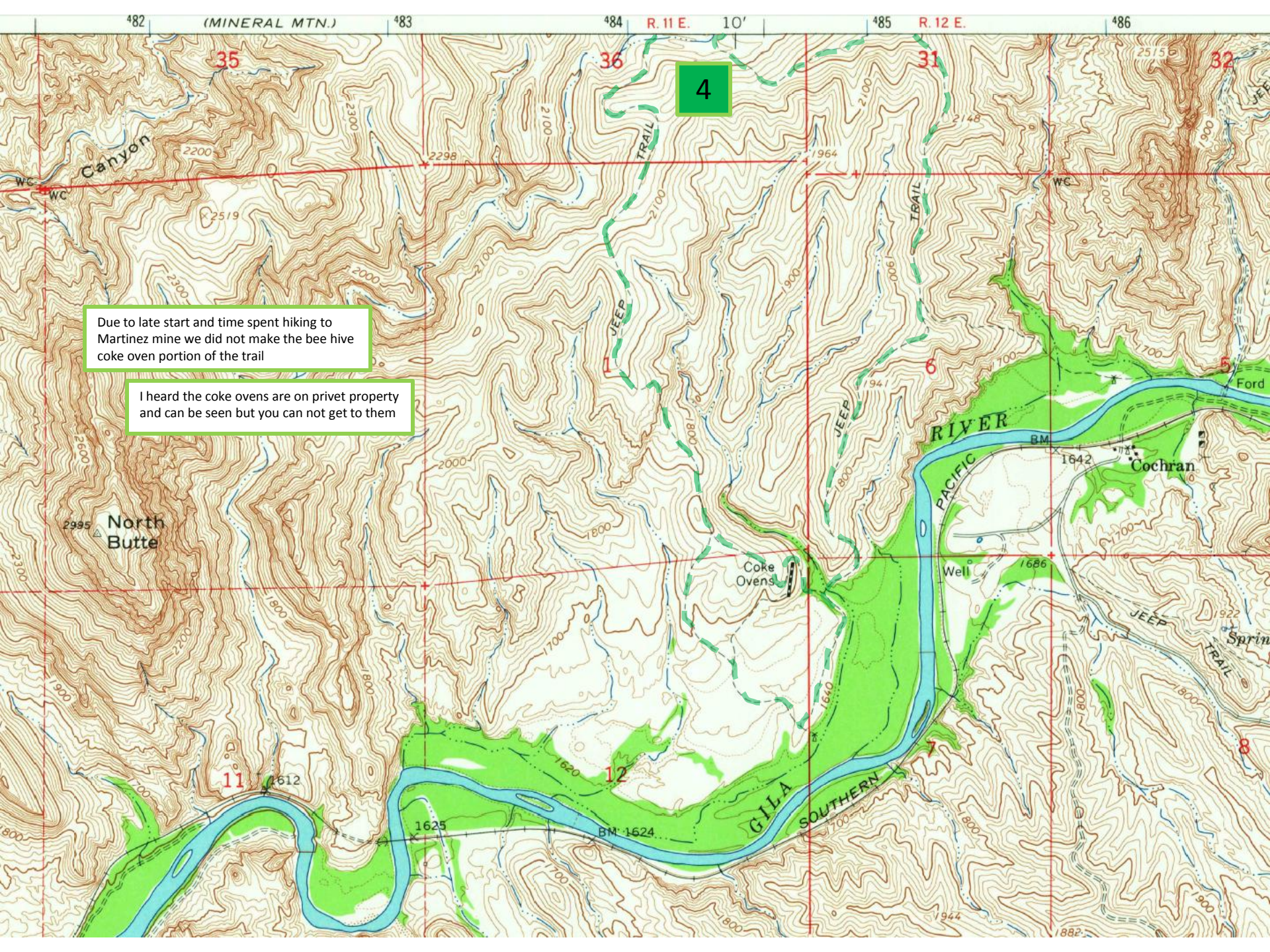
1964



Trail closed to
vehicles beyond this
point

Hike up to the mine is worth every step

3



Due to late start and time spent hiking to Martinez mine we did not make the bee hive coke oven portion of the trail

I heard the coke ovens are on privet property and can be seen but you can not get to them